


AutoProxy x64 (32bit support discontinued)

Usage:

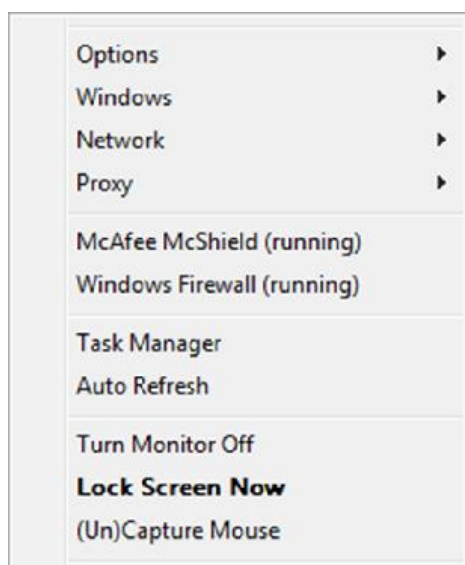
AutoProxy is a collection of tools which provide the following features:

- Automatically determine the actual Network location and switch to the corresponding Profile by changing the Proxy Settings, Default Printer and Default Home Page
- Manually Switch Network Location settings
- With just one mouse click you can
 - Stop or Start specified Windows Services e.g. Virus Scanner, Firewall...
 - Enable/Disable/Restart Network adapters
 - Start Task Manager
 - (extended Control) Lock Screen (but all content still visible)
 - (extended Control) Turn Off Monitor
 - (extended Control) Hide/Unhide Screens (Windows-Logo-Key  + H or U)
 - (extended Control) Restrict Mouse movements to one of multiple monitors
 - (extended Control) Start AutoRefresh
 - Edit Network Locations
 - Detect running VPN applications

After Program Start of Control.exe which is the Main Program you see the following Icon in your System Tray:

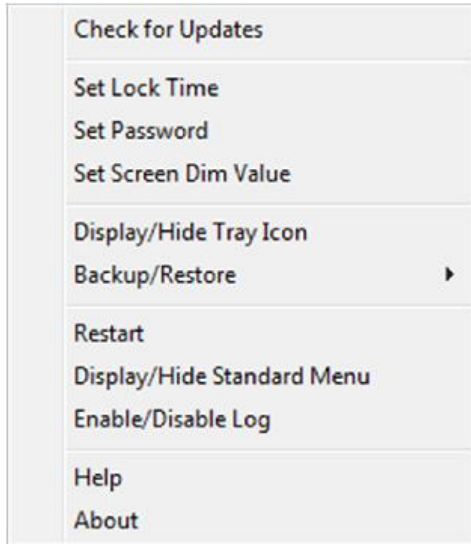


With a right Click you will see the following Main Menu:

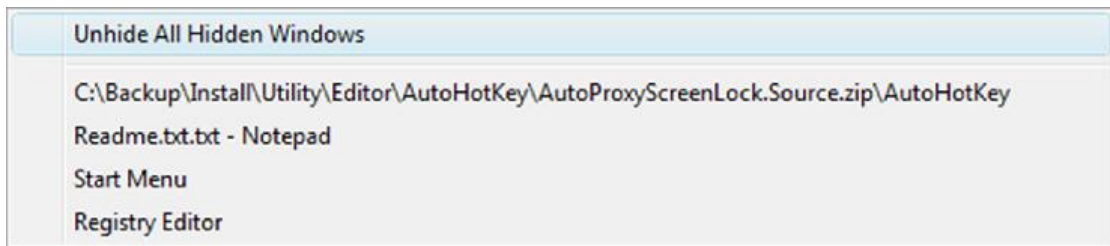


The Sub Menus are:

Options:



Windows (Unhide previously hidden windows)

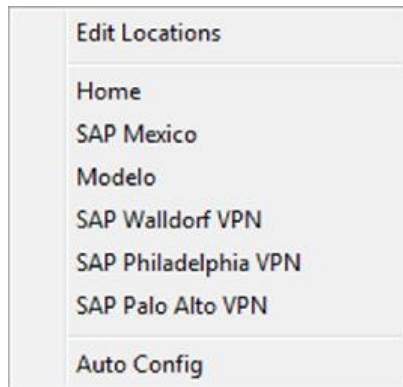


Network



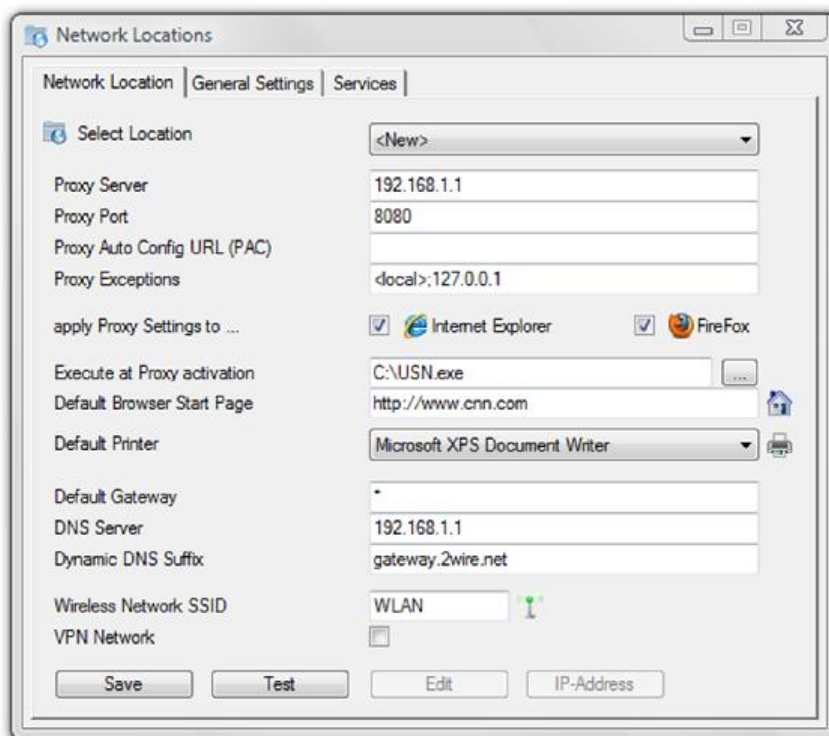
LAN or WLAN adapter can be enabled/disabled or restarted

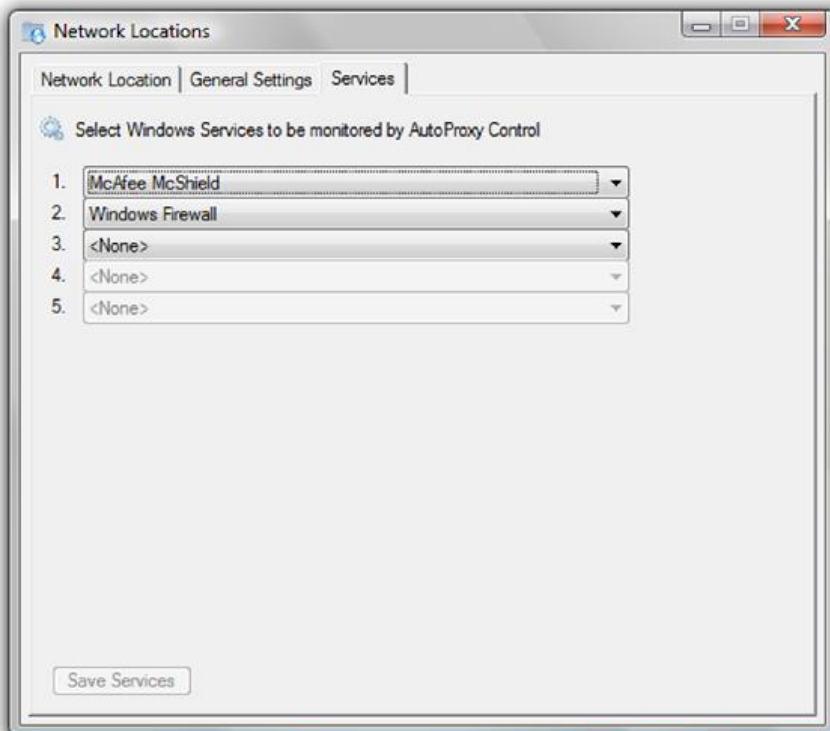
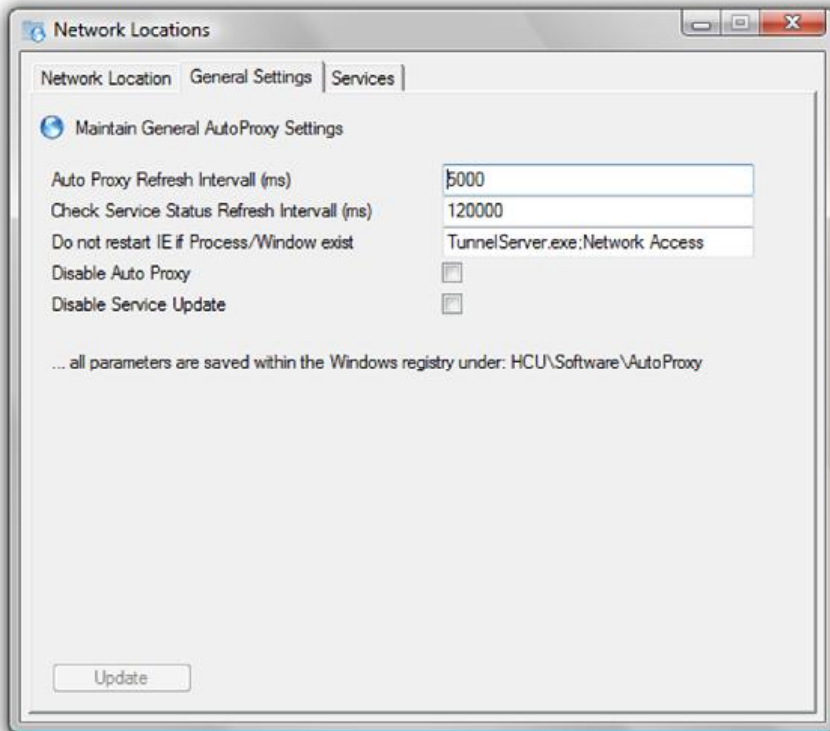
Proxy



Select predefined Proxy locations based on the actual network settings or trigger Auto Location

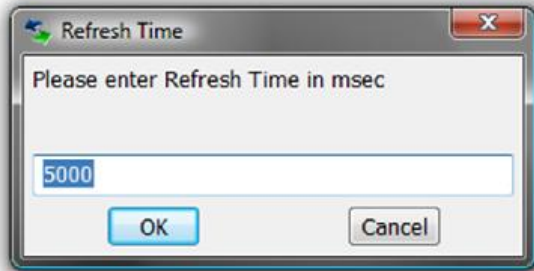
Within the Menu Edit Locations one can create new Locations or edit existing network locations (active VPN connections have priority against non VPN connections during the detection)



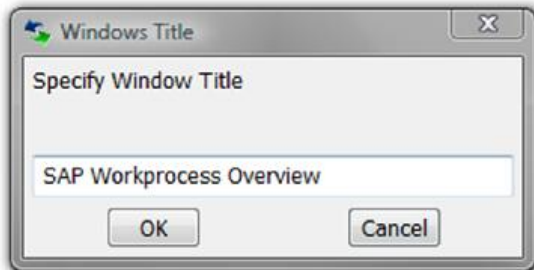


AutoRefresh:

The Program AutoRefresh allows sending specified Key's (e.g. functions keys like F5, F8...) to any open Windows application within a defined refresh interval. At Program Start AutoRefresh is requesting to specify the Refresh Time



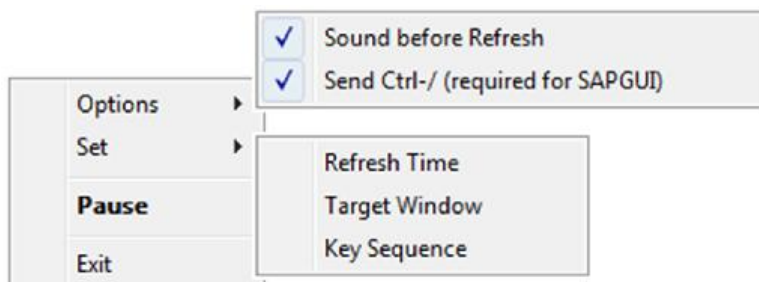
the target application (Name of the Window – the leftmost characters are sufficient as long as the title is unique)



and the Refresh Command Keys (e.g. Function Keys like F1..F5, F8... ENTER...)



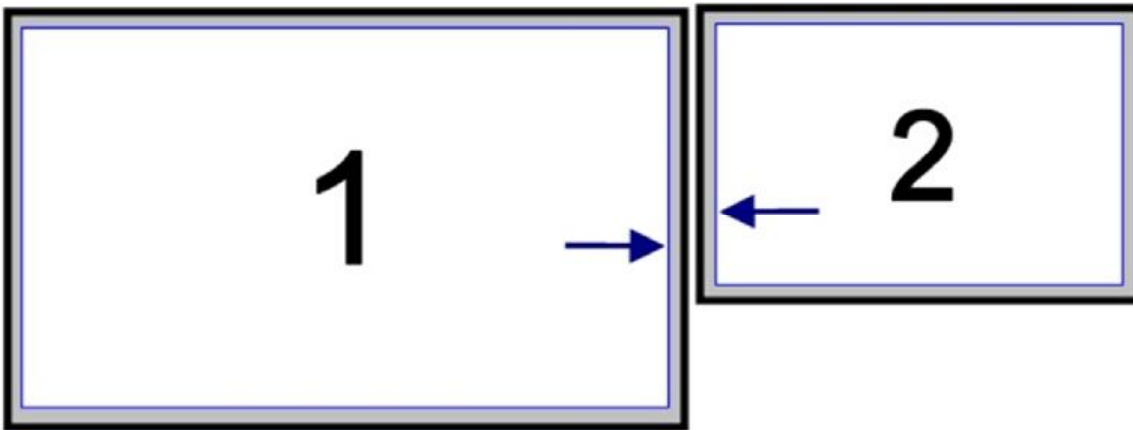
For SAPGui Windows the program is sending automatically Ctrl-/ to move the cursor into the command window (can be disabled under the Options Window for other applications).




MouseCapture:

When working with multiple Monitors (e.g.in Presentation Mode) one can use the MouseCapture to limit the movement of the mouse pointer to one of the two screens in order to prevent losing the mouse pointer.

While MouseCapture is active the movements of the mouse pointer are limited to an area within actual screen which is 5 pixel smaller than the actual screen resolution for that monitor as illustrated in the picture below.



To activate MouseCapture first move the mouse to the target screen and use the Key combination Windows-C (Windows-Logo-Key  + C).

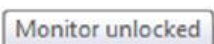
A Tooltip is shown for a few seconds with the details (Monitor, Screen Resolution and working space)



The actual status of MouseCapture is also shown in the Tray menu, indicated by a check box in front of menu item *(Un)Capture Mouse*



To release the mouse pointer press Windows-C again – a Tooltip appears for a few seconds



Installation Instructions:

1. Copy The executables AutoProxy.exe, APControl.exe, EditLocation.exe and IPConfigTest.exe to a new directory C:\Program Files\AutoProxy
2. import the registry file setup.reg
3. (Optional) Adapt your Registry Settings under HKEY_CURRENT_USER\Software\AutoProxy

Registry Keys:

HKEY_CURRENT_USER\Software\AutoProxy\IP\1

```
IPLocation = "SAP Walldorf (VPN)" <<< Name of Location
Gateway = "" <<< Default Gateway (IP-Address or *)
DNSServer = "*" <<< DNS Server (IP-Address or *)
DNSSuffix = "wdf.sap.corp" <<< Dynamic DNS Suffix (Name or *)
isVPN = 1 <<< if network is VPN (preference)
```

HKEY_CURRENT_USER\Software\AutoProxy\Location\1

```
Port = "8080"
Server = "proxy.mex.sap.corp"
Exception= "* .sap-ag.de;<local>"
Locatin = "SAP Mexico"
Device = "\\memex001\MEX6,winspool,Ne06:"
StartPage = "https://portal.wdf.sap.corp/home"
ProxyURL = "http://proxy:8083/accelerated_pac_base.pac"
```

The correct Key for the Device-Entries is located under

HKEY_CURRENT_USER\Software\Microsoft\Windows NT\CurrentVersion\Windows within the Key Device

HKEY_CURRENT_USER\Software\AutoProxy\SSID\1

```
SSID = "SAP" <<< Wireless LAN SSID
Location = "SAP Mexico" <<< Location
```

HKEY_CURRENT_USER\Software\AutoProxy

```
LockTime = dword:0000012c <<< Idle Time to initiate the Screen Lock
```

ScreenPassword = "showme" <<< Unlock Password !!!
DimValue = dword:00000078 <<< How dark should be the screen when locked
VScaner = "McAfee McShield" <<< Name of Virus Scan Service
Firewall = "Windows Firewall" <<< Name of Firewall Service
LAN = "Local Area Connection" <<< Name of Ethernet connection
WLAN = "Wireless Network Connection" <<< Name of WLAN connection
DimSpeed = dword:00000003 <<< how fast to dim the screen when locked
DisableAutoProxy = "" <<< disable Auto Proxy (manual trigger is still working)
DisableIERestart = "" <<< do not restart Explorer at proxy changes
DisableScreenLock = "" <<< disable Screen Lock (manual trigger is still working)

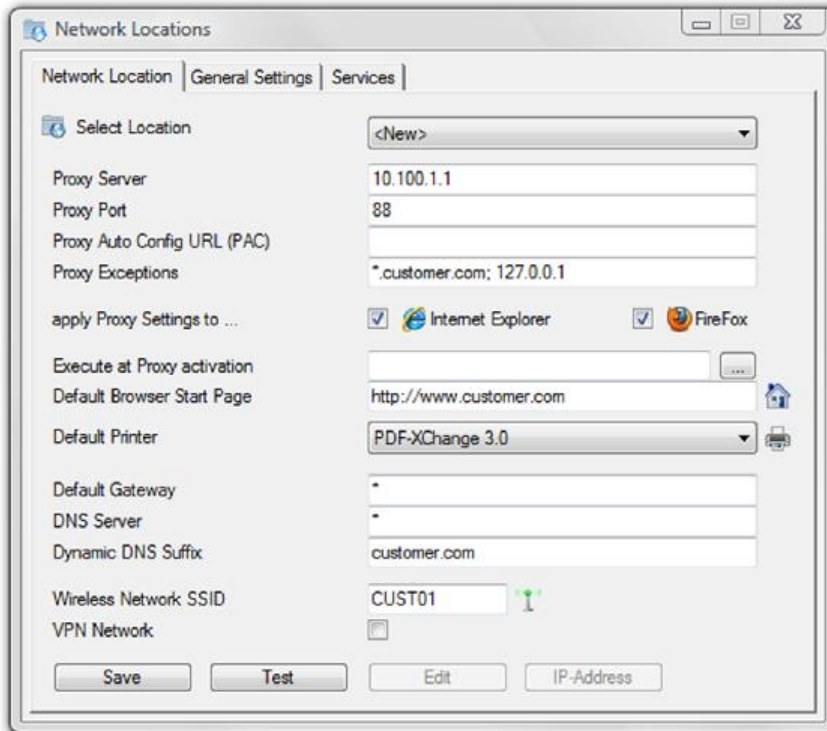
for non english versions of Windows run command IPCONFIG /ALL and put the translated names of the DNSSuffix/Gateway/DNSserver into the below keys (without any spaces)

DNSSuffix = "Connection-specificDNSSuffix"
DefaultGateway = "DefaultGateway"
DNSServers = "DNSServers"

4. (Optional) Add APControl.exe to your Autostart Folder
5. Important
 - on first run of extended control APControlX.exe change the password
 - a backup of all registry setting is created at the very first start this Backup can be restored at any time

Examples:

Customer Location

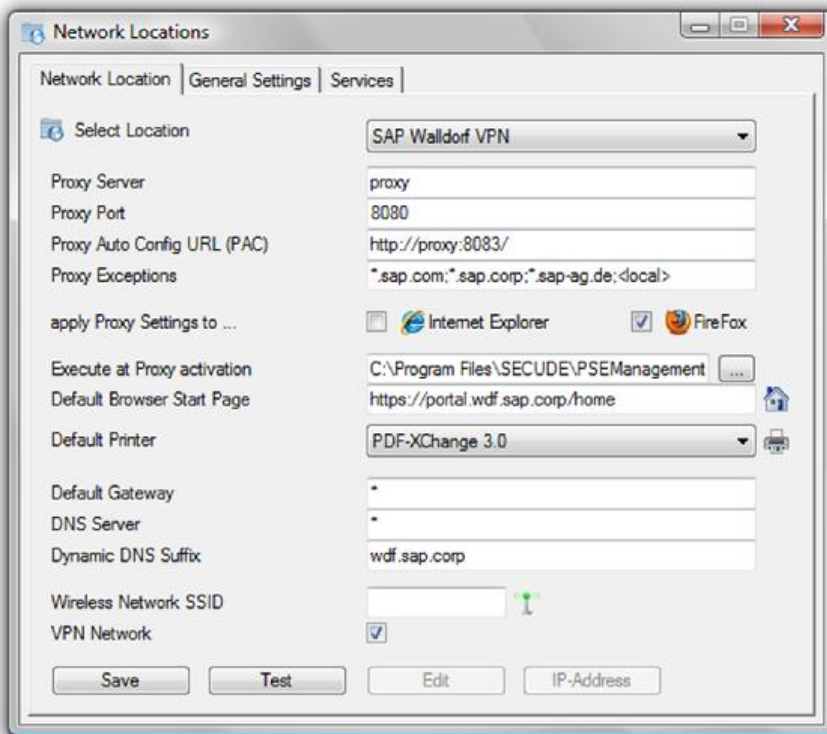


This Example will switch to the settings *Customer* whenever the Dynamic DNS Suffix contains *customer.com* or when the Wireless Network is connected to SSID TA01. The Default Gateway and DNS Servers are ignored.

The Proxy Server will be set to 10.100.1.1, the proxy port to 88 with the proxy exceptions **customer.com; <local>*. The Proxy setting will be applied to Internet Explorer and Firefox with the specified Browser Start Page *http://customer.com/eRoom* and the default printer *PDF-XChange 3.0*.

If ever one should be connected without receiving a proper IP address, DNS Server then the SSID will be used to identify the network location. One can also use only the SSID to define the location, in that case all fields (DNS Server, Dynamic DNS Suffix and Default Gateway must be empty – see last example)

SAP VPN Connection

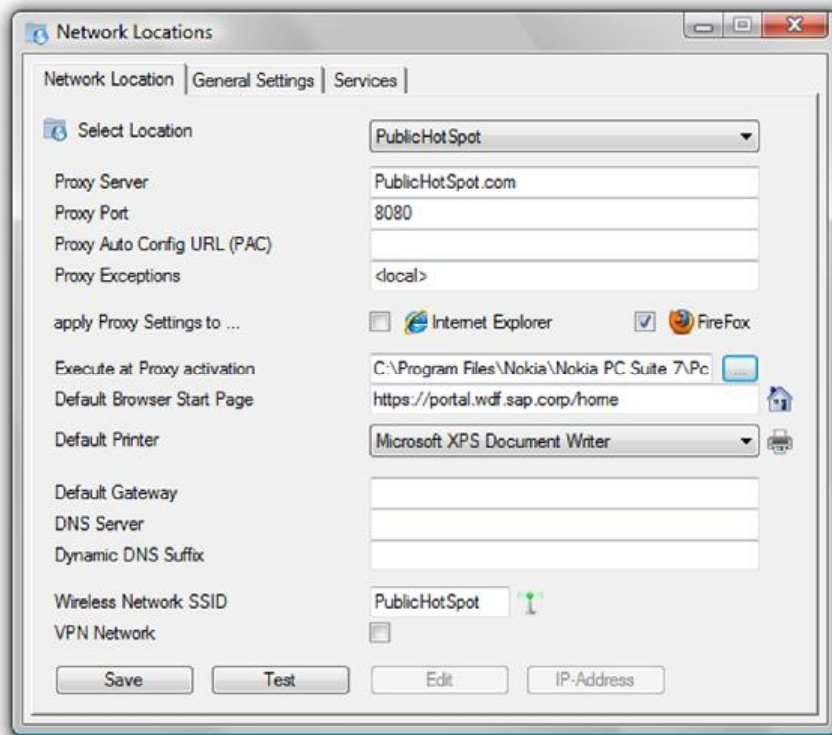


This Example will switch to the settings *SAP Walldorf VPN* whenever the Dynamic DNS Suffix contains *wdf.sap.corp*. The Default Gateway and DNS Servers are ignored but the checkbox *VPN Network* is checked - resulting that this configuration has preference against other non VPN profiles.

The setting will only be applied to FireFox because VPN connection programs such as F5 or FirePass will normally take care of the IE proxy settings.

The Proxy Server will be set to *proxy* port to *8080* with the proxy exceptions **.sap.com;*.sap.corp;*.sap-ag.de;<local>*, The Browser Start Page will be changed to *https://portal.wdf.sap.corp/home* and the default printer *PDF-XChange 3.0*.

Wireless Location



This Example will switch to the settings *PublicHotspot.com Port 8080* if the Wireless Network is connected to SSID *PublicHotSpot* (therefore the fields DNS Server, Dynamic DNS Suffix, Default Gateway must be empty)

System Requirements:

Operating System:	Microsoft Windows XP (SP2), Vista, Windows 7
Main Memory usage (Extended Control):	2.35 MB
Main Memory usage (Standard):	2.30 MB
Required hard disk space (all tools):	3.72 MB
CPU usage (Auto Proxy Control)	5-30 sec./hour (simple TCP/IP services installed)

Version History:

1.9.1.1 (01.03.2012)	- kill VPN networkprocess (e.g. tunnelsever.exe) for non-VPN connections
1.8.1.2 (07.10.2011)	- fixed: several Windows x64 fixes (capture mouse)
1.7.1.1 (01.10.2011)	- detect disconnected network cards (ignore)
1.6.1.1 (01.09.2011)	- don't invoke Proxy change if IP did not change (save last status)
1.5.1.4 (12.07.2011)	- Changed Sequence of evaluating Proxy Settings (backwards)
1.5.1.1 (09.03.2011)	- fixed: several Windows 7 fixes
1.5.0.1 (12.10.2010)	- fixed: several Windows 7 fixes
1.4.1.1 (19.07.2010)	- fixed: IP masking
1.3.4.3 (18.06.2010)	- fixed: reset Proxy when restarting Network Cards, unhide windows only if window name not empty
1.3.4.2 (15.04.2010)	- improvement: ignore IP 0.0.0.0
1.3.4.1 (08.04.2010)	- improvement: close Firefox including confirmation popup
1.3.3.2 (29.03.2010)	- improvement: increase delay for automatic update check (after booting)
1.3.2.5 (01.03.2010)	- fixed: do not update IE proxy settings if F5 active
1.3.2.4 (11.02.2010)	- improvement: IP detection
1.3.2.3 (09.02.2010)	- fixed: uninstall
1.3.2.2 (09.02.2010)	- fixed: default settings
1.3.2.1 (31.01.2010)	- new: execute commands at Proxy activation
	- new: to specify Gateway, DNS Server, DNS Suffix substring are allowed or * entry
1.3.1.7 (29.01.2010)	- fixed icon display in EditLocation.exe, gui background color, new setup program
1.3.1.3 (24.01.2010)	- remove trial restrictions – now unlimited full functionality
1.3.1.2 (23.01.2010)	- fixed: optimize idle check routine
	- check for UserDomain for creating SAP default profile
1.3.1.1 (19.01.2010)	- fixed: temporary disable screen saver while transparent screen lock is active
1.3.0.9 (18.01.2010)	- fixed: Hide Taskbar button when screen is locked
1.3.0.8 (17.01.2010)	- improvement: Hide Windows (new Menu Item)
	- fixed: update or new installation
1.3.0.7 (13.01.2010)	- improvement: maintain Network Locations
1.3.0.5 (12.01.2010)	- improvement: Maintain services
1.3.0.4 (11.01.2010)	- improvement: check for updates as parallel thread
1.3.0.3 (05.01.2010)	- improvement: stop/start services (fixed menu update error)
	- fixed: negative screen coordinates for mouse capture
1.3.0.2 (04.01.2010)	- new: network VPN locations during installations (only for SAP employees)
1.3.0.1 (01.01.2010)	- new: Installer
1.2.1.1 (30.12.2009)	- new: for each profile decide if to apply proxy settings to IE and/or Firefox
1.2.0.6 (30.12.2009)	- fixed: run AutoRefresh asynchronously
1.2.0.5 (29.12.2009)	- new: Added AutoRefresh (send specified KeyCode to selected window every n seconds)
1.2.0.4 (28.12.2009)	- fixed: use netsh instead of proxycfg
1.2.0.3 (26.12.2009)	- fixed: handling of temporary files

- 1.2.0.1 (24.12.2009) - improved: performance improvements
- 1.1.4.5 (23.12.2009) - fixed: update firefox config file prefs.js (corrected entry browser.startup.homepage_override.mstone)
- 1.1.4.2 (22.12.2009) - new: Maintain Wireless Network SSID within Network Locations
- 1.1.3.2 (20.12.2009) - new: Maintenance Window for Services to be controlled by AutoProxy
- 1.1.3.1 (19.12.2009) - improved: detect VPN processes (disable IE restart if active)
- 1.1.1.9 (16.12.2009) - new: Maintenance Window for General Parameters
- 1.1.1.0 (15.12.2009) - new: variable refresh intervals (AutoProxy and Check Service Status)
- 1.1.0.3 (15.12.2009) - improved: thread handling of parallel threads
- 1.1.0.2 (14.12.2009) - improved: proxy handling
- 1.1.0.0 (13.12.2009) - new command line parameters for AutoProxy.exe
- 1.0.0.0 (01.12.2009) - improved: automatic update
- 1.1.0.0 (13.12.2009) - fixed: sequence of VPN's not properly recognized
- 1.0.0.0 (01.12.2009) - new: Services to be controlled by AutoProxy can be added to the menu by maintaining registry key
- 1.0.0.0 (01.12.2009) - first release

(C)opyright 2009 SOO1